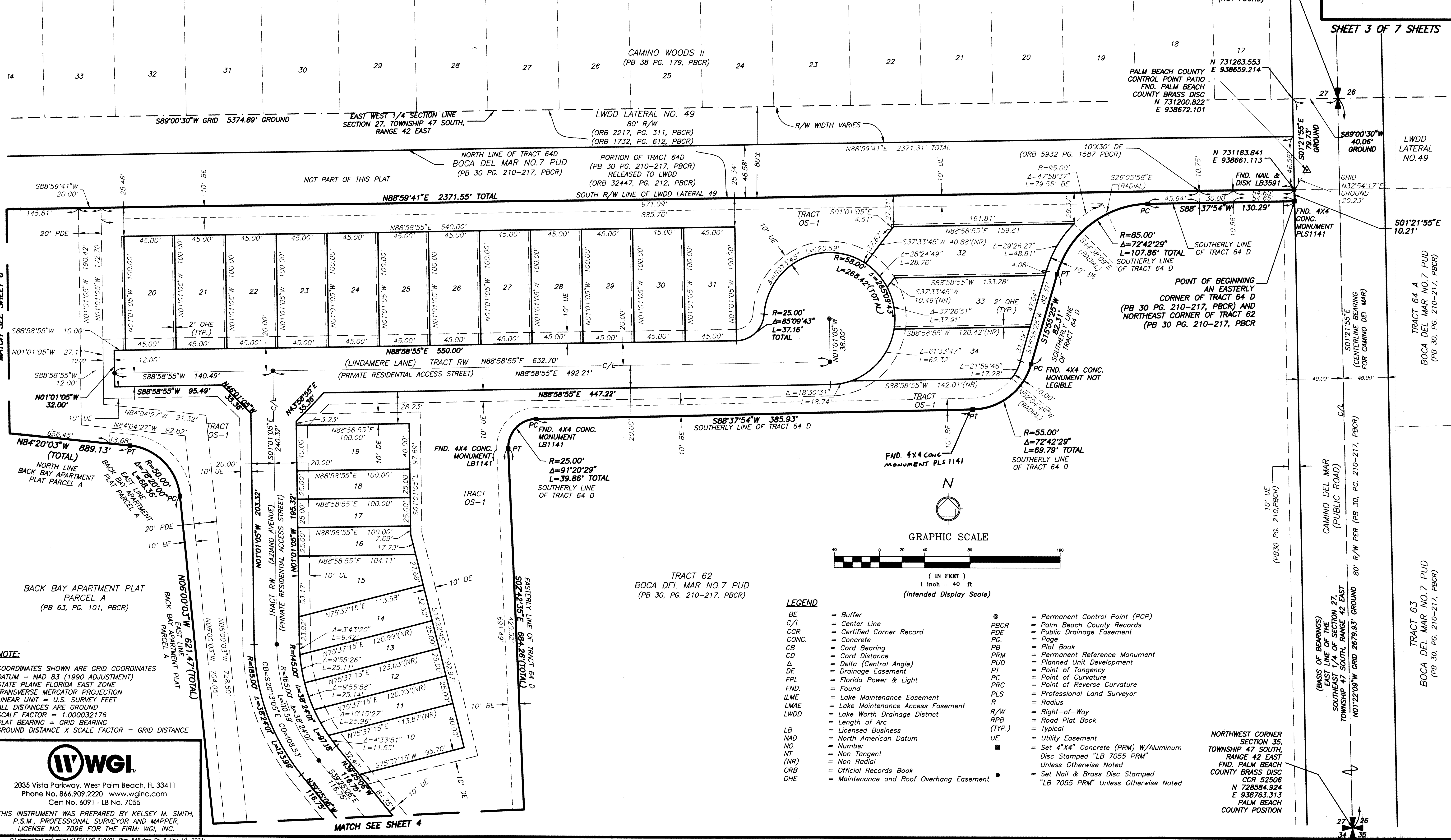
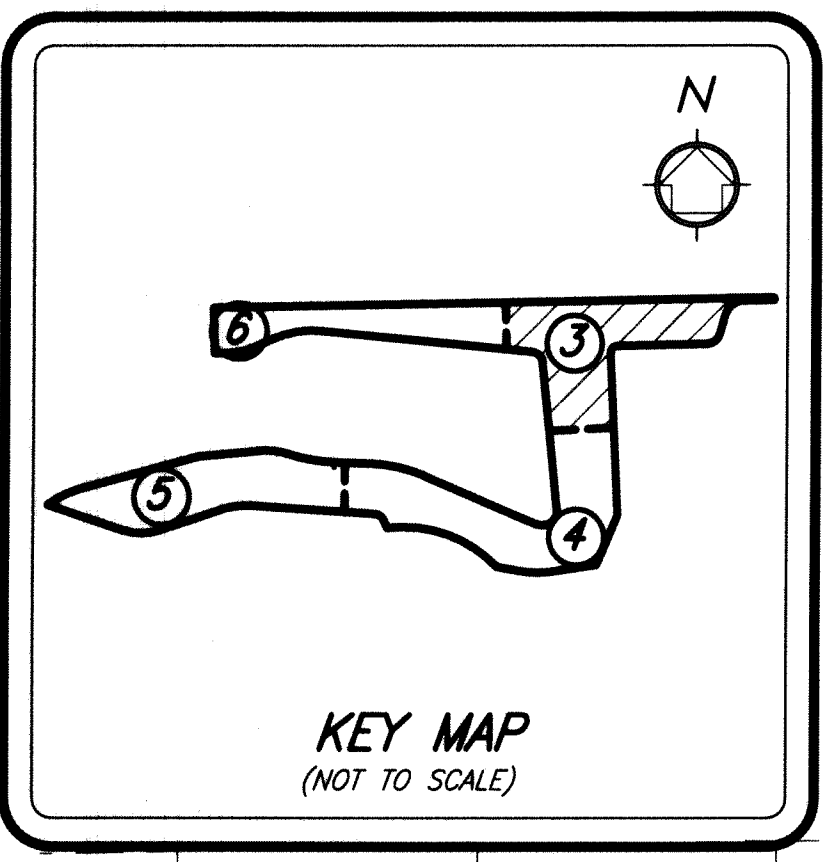


# BOCA DEL MAR PUD - BARRINGTON COVE AT MIZNER VILLAGE

BEING A REPLAT OF A PORTION OF TRACT 64 D, BOCA DEL MAR NO. 7 PUD, PLAT BOOK 30, PAGES 210 THROUGH 217 INCLUSIVE, OF THE PUBLIC RECORDS, PALM BEACH COUNTY, FLORIDA. LYING AND SITUATE IN SECTION 27, TOWNSHIP 47 SOUTH, RANGE 42 EAST, PALM BEACH COUNTY, FLORIDA.

# 61

SHEET 3 OF 7 SHEETS



MATCH SEE SHEET 6

**NOTE:**  
 COORDINATES SHOWN ARE GRID COORDINATES DATUM - NAD 83 (1990 ADJUSTMENT) STATE PLANE FLORIDA EAST ZONE TRANSVERSE MERCATOR PROJECTION LINEAR UNIT = U.S. SURVEY FEET ALL DISTANCES ARE GROUND SCALE FACTOR = 1.000032176 PLAT BEARING = GRID BEARING GROUND DISTANCE X SCALE FACTOR = GRID DISTANCE

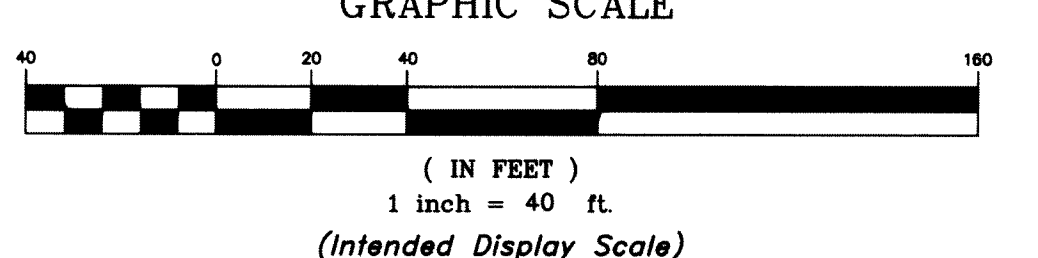


2035 Vista Parkway, West Palm Beach, FL 33411  
 Phone No. 866.909.2220 www.wginc.com  
 Cert No. 6091 - LB No. 7055

THIS INSTRUMENT WAS PREPARED BY KELSEY M. SMITH, P.S.M., PROFESSIONAL SURVEYOR AND MAPPER, LICENSE NO. 7096 FOR THE FIRM: WGI, INC.

**LEGEND**

- BE = Buffer
- C/L = Center Line
- CCR = Certified Corner Record
- CONC. = Concrete
- CB = Cord Bearing
- CD = Cord Distance
- Δ = Delta (Central Angle)
- DE = Drainage Easement
- FPL = Florida Power & Light
- FND. = Found
- LMLE = Lake Maintenance Easement
- LMAE = Lake Maintenance Access Easement
- LWDD = Lake Worth Drainage District
- Length of Arc
- LB = Licensed Business
- NA = North American Datum
- NO. = Number
- NT = Non Tangent
- (NR) = Non Radial
- ORB = Official Records Book
- OHE = Maintenance and Roof Overhang Easement
- ⊙ = Permanent Control Point (PCP)
- PBCR = Palm Beach County Records
- PDE = Public Drainage Easement
- PG. = Page
- PB = Plat Book
- PRM = Permanent Reference Monument
- PUD = Planned Unit Development
- PT = Point of Tangency
- PC = Point of Curvature
- PRC = Point of Reverse Curvature
- PLS = Professional Land Surveyor
- R = Radius
- Right-of-Way
- R/W = Road Plat Book
- RPB = Road Plat Book
- (TYP.) = Typical
- UE = Utility Easement
- Set 4"x4" Concrete (PRM) W/Aluminum Disc Stamped "LB 7055 PRM" Unless Otherwise Noted
- Set Nail & Brass Disc Stamped "LB 7055 PRM" Unless Otherwise Noted



WEST 1/4 CORNER SECTION 26, TOWNSHIP 47 SOUTH, RANGE 42 EAST CCR 52493 N 731264.181 E 938699.272 PALM BEACH COUNTY POSITION (NOT FOUND)

PALM BEACH COUNTY CONTROL POINT PATIO FND. PALM BEACH COUNTY BRASS DISC N 731200.822 E 938672.101

N 731183.841 E 938661.113 FND. NAIL & DISK LB3591

POINT OF BEGINNING AN EASTERLY CORNER OF TRACT 64 D (PB 30 PG. 210-217, PBCR) AND NORTHEAST CORNER OF TRACT 62 (PB 30 PG. 210-217, PBCR)

NORTHWEST CORNER SECTION 35, TOWNSHIP 47 SOUTH, RANGE 42 EAST FND. PALM BEACH COUNTY BRASS DISC CCR 52506 N 728584.924 E 938763.313 PALM BEACH COUNTY POSITION

GRID N32°54'17"E GROUND 20.23'

CAMINO DEL MAR (PUBLIC ROAD) 80' R/W PER (PB 30, PG. 210-217, PBCR)

MATCH SEE SHEET 4

TRACT 64 A BOCA DEL MAR NO. 7 PUD (PB 30, PG. 210-217, PBCR)

TRACT 63 BOCA DEL MAR NO. 7 PUD (PB 30, PG. 210-217, PBCR)